

A teal-tinted photograph of a workbench. In the foreground, there is a light-colored canvas tool bag with the number '5416' printed on it. A black tape measure is coiled around the bag. Next to the bag is a black and tan work belt with multiple pockets and straps. The background is slightly out of focus, showing what appears to be a workbench with various tools and materials.

# TARLTON

Volunteer Projects for  
Charitable Organizations **2021**

# WE LOVE OUR COMMUNITY

It's no secret that Tarlton loves our community. That's why, these last few months, we've taken the opportunity to give back. As some of our larger future projects were in preconstruction, we took that downtime to show our appreciation for the community that has given us so much and to return the favor.



# Cornerstone

6031 Suburban Ave.

This opportunity included rehabilitation of an old house located on Suburban Avenue in the West End neighborhood. The team installed a new subfloor overlay and interior partition framing.



## PARTICIPANTS

Jim Mraz, Dennis Lawrence, Jim Mraz Jr.,  
Mark Cain and Blake Kreutzberg



# The Starwood Group

901 N. 11<sup>th</sup> Street

Work included hanging drywall throughout the entire first floor of the building, totaling approximately 25,000 sf. The space is to be finished later by the Starwood Group for additional office space.



## PARTICIPANTS

Brandon Farmer, Jim Mraz,  
Jeff Vogt and Blake Kreutzberg



# Harris House

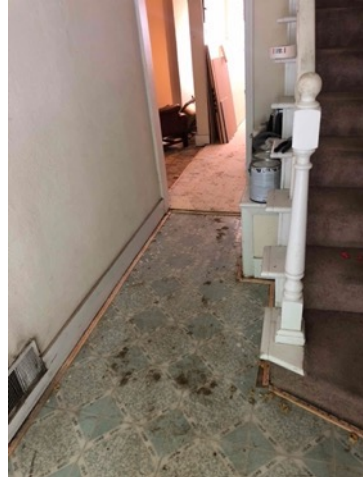
8306 Pennsylvania Ave.

Tarlton removed and replaced the rear deck, removed and replaced the kitchen cabinets, repaired a damaged roof area, installed vinyl plank flooring, patched and resurfaced the front porch, and added a new handrail.



## PARTICIPANTS

James Tillman, Joe Trail, Fred Dunn,  
Pat Barry and Heriberto Rendon



# Hawthorn Leadership School for Girls

1901 Kingshighway Blvd.

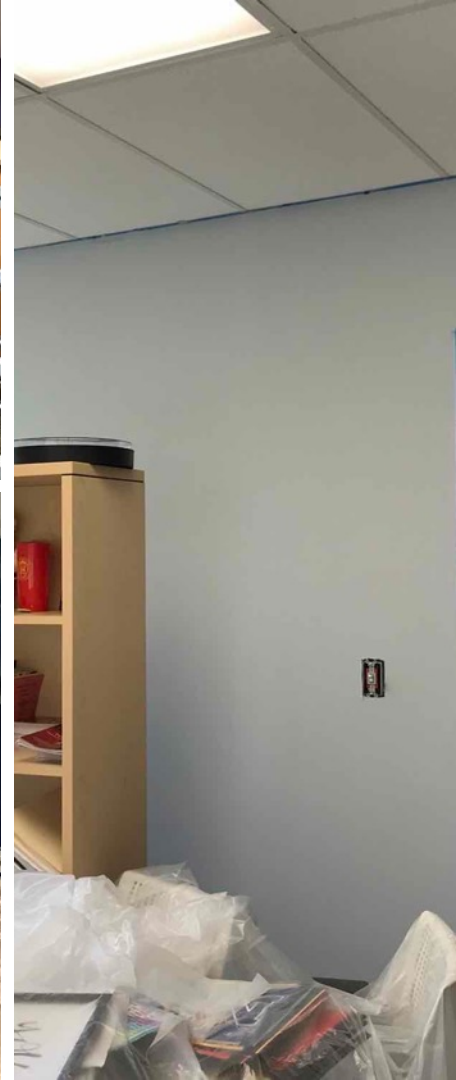
Tarlton painted several areas including the cafeteria, main office and staff offices.



## PARTICIPANTS

James Tillman, June Schall,

Tymira Grainger and Quiana Tate



# Salvation Army - Family Haven

Overland, MO

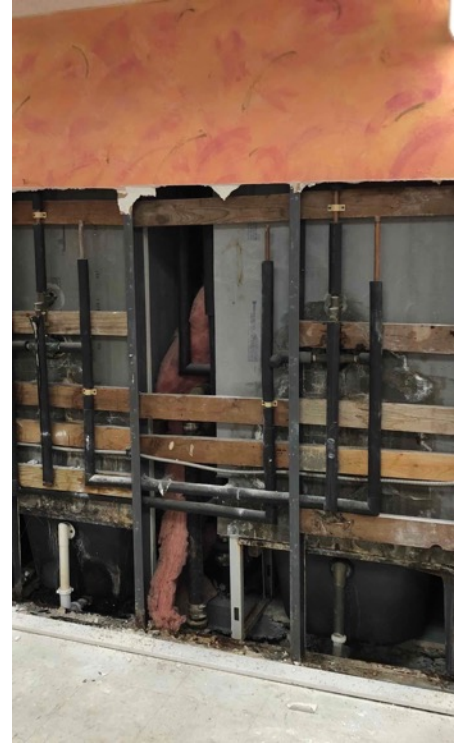
Family Haven is a shelter for women and children located on Page Avenue in Overland, Missouri. It houses a daily community meal kitchen that was built in 1965 and was on the brink of being shut down by the Health Department. Tarlton donated roughly 400 hours of labor to restore it.



## PARTICIPANTS

James Tillman, Quiana Tate,

Brian Copeland , Pat Berry and Cole Battreal



# Salvation Army - Family Haven

Overland, MO

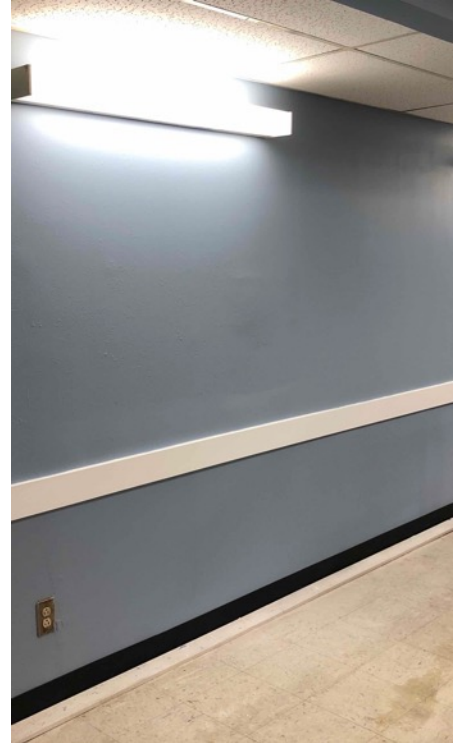
To date, Tarlton has spent about 5 weeks making improvements to the Family Haven House. Working with Kamerlen Food Service, we have cleaned up the kitchen with fresh paint on all doors, walls and the ceiling, plus FRP on any wet walls and behind the steam table (we patched damaged drywall). We removed floor tile with the help of an abatement crew and replaced it with an epoxy floor covering. We also replaced all ceiling tiles in the dinning room and kitchen corridor.



## PARTICIPANTS

James Tillman, Quiana Tate,

Brian Copeland , Pat Berry and Cole Battreal



# Salvation Army - Family Haven

Overland, MO

The team also removed old wood shelving from the kitchen and replaced it with wire shelving, added 5 stainless corner guards (donated by Waterhout Construction), added crash railing to the walls in the dining room, and replaced cove base that was missing or removed.

Tarlton assumed the familiar role of GC to assist with getting leaking plumbing lines in the wall fixed, getting broken lines in the floor fixed, and correcting a gas line that was not to code.



## PARTICIPANTS

James Tillman, Quiana Tate,

Brian Copeland , Pat Berry and Cole Battreal

